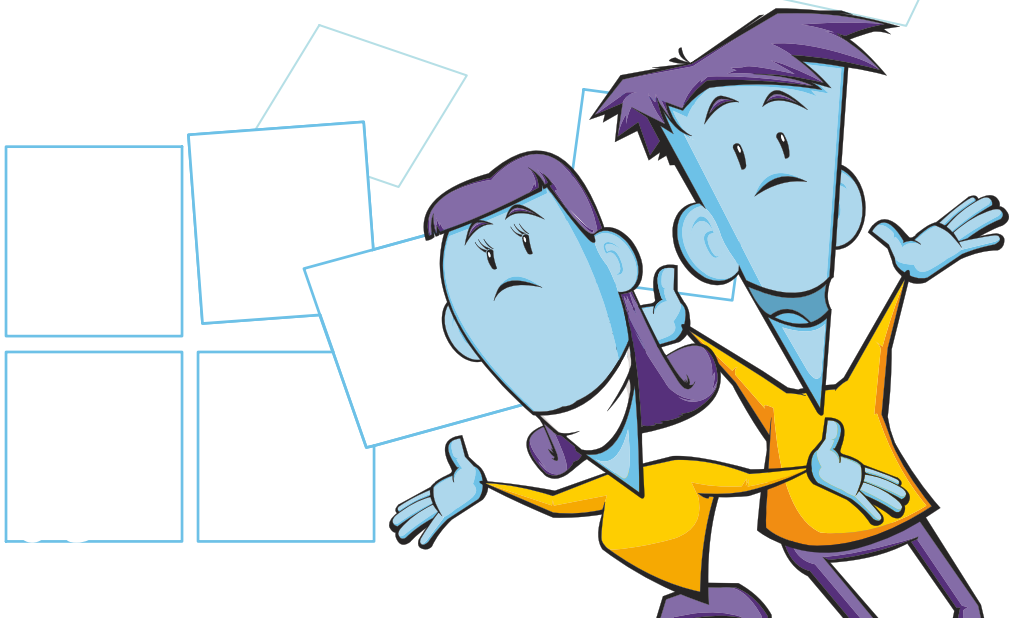


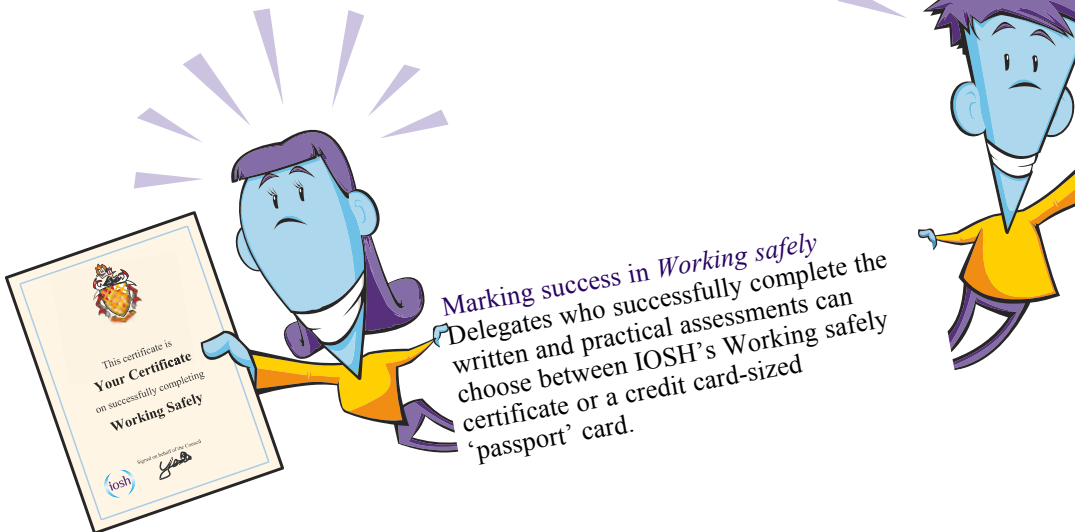
**Safety 1st Consultancy
168 Maxwellton Avenue
East Kilbride
G74 3DX
Tel: 01355-222994
Mob: 07939-227573**



Forget 'chalk and talk'. It's time to turn traditional training on its head. We need to inspire delegates, to get them engaged with health and safety. If learning is enjoyable and stimulating we stand a better chance of getting vital health and safety messages across.

Easier said than done? Not if we work in partnership. We provide the tools, and our accredited trainers provide the training expertise.

- a one-day course offering all the basics in a high impact interactive package
- fantastic quality animated graphics created exclusively for the course
- a presentation that's designed to be fun, and get people fully involved and interested
- first class, jargon-free technical content based on what people need to know in practice, not off-putting legal language
- clear scenarios drawn from genuine work situations to drive home practical points
- the very latest training tips and suggestions – from grabbing and retaining attention to maximising the training experience and making sure key points are taken on board
- assessments built into the day's training – no need for follow-on tests on separate days, taking up valuable work time



Working safely is for people at any level, in any sector, needing a grounding in the essentials of health and safety. Everyone at work should have an understanding of why they must 'work safely' – and this course offers exactly that.

What they need to know – and are perhaps reluctant to learn about – in a refreshingly informal way.

Working safely isn't supposed to turn delegates into safety experts. It focuses on why health and safety is important, and how individuals can make a real difference to the wellbeing of themselves and others through changing their behaviour.

- nationally recognised and respected certificated training for their teams
- peace of mind offered by training that's designed and quality-controlled by the Chartered body for health and safety
- minimum disruption to working days and shifts – the one-day programme includes the assessment, so there's no need to free up further time for a test after the course
- Working safely meets the government's guidelines for introductory health and safety training and is a 100 per cent match to the Health and Safety Executive's 'passport' syllabus
- two key areas – health and safety and environmental basics – are covered in a single self-contained session

COURSE CONTENT

Duration: One day

Target Audience: All employees
– suitable to complement your own induction training

Assessment: Short test

Programme

- Module 1 – Introducing working safely
- Module 2 – Defining hazard and risk
- Module 3 – Identifying common hazards
- Module 4 - Improving safety performance
- Module 5 – Protecting our environment



It's not unusual for delegates coming on an introductory course to think that accidents only happen to 'other people'. This module stresses the realities of the human suffering behind the statistics and emphasises the importance of personal responsibility.

This module puts 'hazard' and 'risk' into everyday language, and uses familiar examples to show what can happen. Importantly, it makes it clear that even something that is very simple or repeated over and over again can go wrong, with serious consequences. Focusing on the six broad hazard groups, delegates are asked to think about the hazards and risks they come across in their own work. 'Risk assessment' is demystified – delegates learn that we all carry out informal assessments day in, day out.

All the main issues are covered in this module – entrances and exits, work traffic, fire, chemicals, electricity, physical and verbal abuse, bullying, stress, noise and the working environment, slips, trips and falls, and manual handling. Each area is backed by crystal clear examples and recognisable scenarios, and useful summaries reinforce the key learning points.

This module deals with systems and processes, making sure that any jargon is explained in easily understood terms. The session bridges the gap between management and workforce, encouraging delegates to play a part in processes that are commonly seen as just down to their manager or supervisor. Other areas – including contract work, inspections, safe

systems and permits, protective equipment, signage, emergency procedures, reporting and health checks – are all focused on from the delegate's point of view.

A short but effective introduction to waste and pollution leads into a look at how organisations and individual team members can get involved in reducing environmental impacts. Memorable and thought-provoking facts and figures help drive the points home.